

Community Information

Costa Mesa





COSTA MESA

Costa Mesa is known as one of Orange County's foremost cultural and business centers. The city includes a total of 16 square miles and has a population of approximately 113,440 as of 2007.

Many consider the center of Costa Mesa to include the area right off the 5 freeway and Bristol Street that includes the Orange County Performing Arts Center, South Coast Repertory Theater and South Coast Plaza. Although the city has much more to offer with its many parks and recreation centers and the Orange County Fairgrounds.

The major industries in the city are services and trade followed by manufacturing with it's largest employer being the Southern California Auto Club.

History

Located on the "coastal tableland" above Newport Bay, Costa Mesa was once grazing grounds for cattle belonging to the Mission San Juan Capistrano. At the beginning of the 19th century, missionaries built an adobe "Estancia" or way-station for the vaqueros who tended the herds. This structure still stands and was recently restored and transformed by the City into a museum at 1900 Adams Avenue.

In 1810, this same area was a part of the Spanish land grant of Santiago Del Santa Ana made to Jose Antonio Yorba. By 1880, settlers had begun buying portions of the rancho from Yorba's heirs and in the same decade established the town of Fairview. A school house and church were built near the present intersection of Harbor and Adams, and a 25-room hotel accommodated visitors to the nearby hot sulfur springs. However, in early 1889, a storm washed out the railroad and brought financial disaster to the community which soon reverted to a farming area.

By this time, the little town of Harper, named after a nearby rancher, had emerged on a siding of the Santa Ana and Newport Railroad. Its first business, Ozmen's General Store, stood on the corner of Newport and 18th Streets and contained the City's first post office, established in 1909. On May 11, 1920, Harper officially changed its name to Costa Mesa, which means coastal tableland in Spanish, and continued as an agricultural community, growing sweet potatoes, corn, tomatoes, strawberries, and apples.

Building and oil drilling industries were just beginning to bring new growth to the City when the depression hit Southern California. Industries collapsed and the local bank closed. More disaster followed when the 1933 earthquake shook the town, damaging businesses and the Main School. But the school was soon rebuilt and continued in operation as the Clara McNally School. These buildings are now used for school administrative and service purposes.

World War II brought many thousands of people to the area for training at the Santa Ana Army Air Base, located on what is now the Orange County Fairgrounds, Orange Coast College, and the present site of the Civic Center. When the war ended, many of these men and women returned with their families to begin the population boom which continues today.





On June 29, 1953, the City was incorporated and City Council-Manager form of government was chosen. The new City had an area of 3.5 square miles and a population of 16,840. Within 35 years, by 1988, the population had risen to 90,000 and the area to 17 square miles.

Today, Costa Mesa is a major commercial and industrial center of Orange County. The 2005 Census noted population at 113,143. The City, which formally adopted the slogan "The City of the Arts" in 1999, is home to a regional symphony orchestra and the South Coast Repertory Theater. The 3,000-seat Orange County Performing Arts Center was completed in 1985. In 2006, both the 2,000-seat Renee and Henry Segerstrom Concert Hall and the 500-seat Samueli Theater held their grand openings.

The Estancia Adobe is a historical landmark located in the northwest section of Costa Mesa. The Adobe was originally constructed around 1820 to house the area herdsmen, but it later became the home of Don Diego Sepulveda. With the passing of the Era of the Dons, the property changed hands many times with the Segerstrom family obtaining possession in 1940. In 1963, the Segerstrom family donated the Estancia and its five-acre site to the City of Costa Mesa as a memorial to the early settlers of the area.



Arts & Culture

Costa Mesa Theater & Arts District: Known as the standing ovation capital of Orange County, Costa Mesa is home to the Theater & Arts District, acclaimed as one of the most thriving performing and visual arts campuses in the world.

The District includes the Orange County Performing Arts Center (OCPAC), Segerstrom Center for the Arts, which comprises the Renée and Henry Segerstrom Concert Hall and Samueli Theater, plus the Tony Award-winning South Coast Repertory (SCR), and a visual arts facility to be built at a later date. An expansive 46,000-square foot community plaza, which was created by Peter Walker and Partners, unites the two Centers.

There are also many outstanding works of art, including Connector, a towering sculpture designed by Richard Serra that graces the plaza. Visitors are encouraged to take a walking tour of the district to experience the spectacular works of Jean Dubuffet, Henry Moore, Joan Miro, Charles O. Perry, and Isamu Noguchi, among other world-class figures whose artistry is on public display locally. A centerpiece is Noguchi's 1.6-acre collection of sculptures and plantings called California Scenario.



Places of Interest

Orange County Museum of Art at South Coast Plaza

Formed through the merger of Laguna and Newport Harbor Art Museums in July 1996, OCMA continues and expands upon the artistic legacy of its two predecessor organizations. Exhibitions organized by OCMA's curators are in demand and regularly are circulated to major cities across the country. Today,



an exciting and ever-changing schedule of exhibitions is presented throughout the year at the two museum locations in Costa Mesa and Newport Beach. South Coast Plaza: 3333 Bear Street, Costa Mesa, CA / 714-662-3366

Orange County Performing Arts Center

The world's greatest singers, dancers, actors and musicians create spectacular entertainment in The Center's acoustically superb 3000-seat Segerstrom Hall and the intimate ambiance of the 250-seat Founders Hall. Segerstrom Hall: 600 Town Center Drive, Costa Mesa, California 92626 / 714-556-2787

South Coast Repertory

Tony Award-winning South Coast Repertory is one of the country's leading producers of new plays. In its 46-year history, it has presented more than 110 world premieres – including eventual Pulitzer Prize-winners Wit and Rabbit Hole – alongside classical works and modern masterpieces. SCR also offers family-friendly children's shows and an annual production of the beloved holiday classic, A Christmas Carol. 655 Town Center Dr., Costa Mesa, CA 92626 / 714-708-5555

Costa Mesa Historical Society Museum

Housing a collection of local history items including natural and man-made objects, photographs and maps, newspapers, periodicals and other items of historic value. 1870 Anaheim Avenue, Costa Mesa / 949-631-5918



Opera Pacific

In just twenty seasons, Opera Pacific has established itself as one of the finest professional opera companies in the nation. Opera Pacific's mainstage productions, extensive community outreach programs, and energetic Guild Alliance combine to create a cultural resource for all of Southern California. 600 Town Center Drive, Costa Mesa, CA 92626 / 714-556-2787

Fairview Park

All areas of the park provide unique scenery for horseback riding, hiking, walking, running, and biking. Model glider airplane flying also take place at the center of the park with organized flying events and plenty of help from experts. And the Orange County Model Engineers operate the Railroad Station at the eastern end of the park and provide free model train rides on the third weekend of each month. 2525 Placentia Ave, Costa Mesa

Costa Mesa Bark Park

CMBP is a two-acre fenced off-leash park in the City of Costa Mesa. The park has a separate area for small, elderly and disabled dogs. Facilities include double-gated entrance, parking, trees, benches, water dispensers for the dogs, dog waste bags and restroom. Hours: The Park is open from dawn to dusk, Wednesday through Monday. It is closed all day every Tuesday for park maintenance. The Park is located on the corner of Arlington Avenue and Newport Boulevard in TeWinkle Park, across the street from the Orange County Fairgrounds Equestrian Center. 949-733-4101



Orange County Fairgrounds

From the annual Orange County Fair to the various events and activities that take place at our grounds throughout the year, the Orange County Fair & Exposition Center has more to offer than meets the eye. 88 Fair Dr., Costa Mesa, CA 92626 / 714-708-FAIR



Metro Pointe at South Coast

Offering state-of-the-art movie theaters, unique restaurants, apparel, home-accessory stores and more.

South Coast Plaza: "The Ultimate Shopping Resort"™

South Coast Plaza's unparalleled collection of boutiques and anchor stores, many of which are exclusive to California and the United States, attracts visitors from around the world. The Center continues to prevail as one of the nation's most luxurious shopping destinations for high fashion, home furnishings, dining, spa services and more. 3333 Bristol St., Costa Mesa, CA 92626 / 800-782-8888

Annual Events

WINTER

A Christmas Carol: November - December

Orange County's happiest family tradition is 27 years old! Once again, Tiny Tim, Bob Cratchit and, of course, Ebenezer Scrooge himself will bring 19th-century London to life in Orange County's favorite Christmas tradition. South Coast Repertory / (714) 708-5555

Santa's Arrival at South Coast Plaza: November

Enjoy song and dance performances by students from the Orange County High School of the Arts as they celebrate Santa's Arrival. Children will be able to take part in this interactive production and magical parade to Santa's Village led by Santa Claus himself. South Coast Plaza / 714-435-2000

Annual Tree Lighting Ceremony: November

One of Orange County's oldest and best loved holiday traditions. Witness Santa's spirited arrival during the lighting of a live 90-foot Christmas tree. Free to the public. Town Center Park, beside The Westin South Coast Plaza / 714-435-2000

Swedish Christmas Fair: November

A traditional and authentic Swedish Christmas, complete with a St. Lucia procession brought to you by the SWEA of Orange County. Wonderfully decorated exhibits, food, arts and crafts, traditional music, dancing and activities for children will be available as well as visits from both St. Lucia and the Swedish Santa Claus or "Jultomten". Costa Mesa Community Center: 1845 Park Ave

Nutcracker for Kids: December

A condensed version of Tchaikovsky's delightful Christmas ballet, designed specifically for kids. Performance also includes a visit from Santa and a sing-a-long. Orange County Performing Arts Center - Segerstrom Hall / 714-556-ARTS

La Posada Magica: December

Performed in English with a Latin beat, this enchanting musical play for the entire family is about a young girl who joins her neighborhood posada on Christmas Eve. Along the way, Gracie and her companions encounter colorful characters, including chocolate-gobbling sisters, graveyard spooks and a hearthrob rock singer. Finally, the journey through her community commemorates Joseph and Mary's search for lodging and becomes for Gracie a time of discovery renewal and reunion. South Coast Repertory / (714) 708-5555





Annual Fascination of Orchids International Show

One of the largest orchid shows in the world, in addition to many orchid lectures, there will be over 100 orchid exhibits and thousands of orchids available for purchase from world wide growers. Admission is \$3 and parking is free.
Orange County Fairgrounds

SPRING

Pet Expo: April

It's the largest pet and pet product expo in the world. Over 1,000 animals will entertain you in stage shows, competitions and demonstrations including dogs, cats, birds, fish, reptiles, rodents, goats, pigs, llamas, alpaca, rabbits, miniature horses and more. Also, pet adoptions, pet products for sale, petting zoo, how-to workshops and advice from animal experts. Presented by a nonprofit organization to promote responsible pet care. Lots of free parking. Please do not bring your pets. Orange County Fairgrounds: 88 Fair Drive, Costa Mesa

SUMMER

South Coast Plaza Summer Food & Wine Festival: June

Guests enjoy premium wines, live music and culinary specialties from South Coast Plaza restaurants. The festival benefits Second Harvest Food Bank of Orange County and Someone Cares Soup Kitchen. South Coast Plaza / 714-435-2171

Lions Club Fish Fry: June

Since 1945, the event features a parade, carnival, food and rides in Lions Park.

The Orange County Fair: July - August 2

The Orange County Fair is the premier family attraction in Southern California offering a wide variety of exhibits, foods, entertainment, rides and hands-on activities. There is something for everybody at the Fair including the summer headline concert series, working farm and petting zoos, thrill rides, contests, and games. Orange County Fairgrounds / 714-708-FAIR

Annual Lounge Chair Theatre: August

Get ready for an evening under the star with friends, family, and film! Activities, candy and refreshments! Be sure to bring your folding chairs, jackets, blankets, pillows and flashlight. Parking available in the main lot, with additional spaces at Estancia High School. Fairview Park: 2625 Placentia Ave / (714) 754-5698

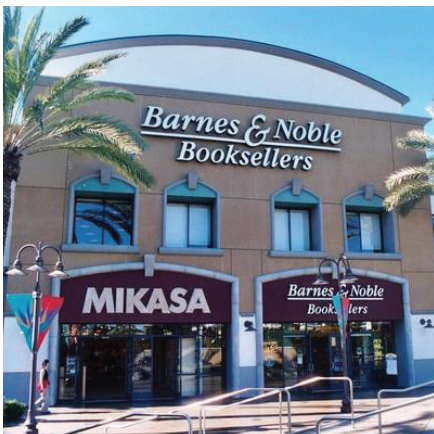
FALL

Food, Wine & Micro-Brew Fest: October

An evening of great cuisine from over 50 of Orange County's finest restaurants, tastings of premium wines and regional micro-brews. The atmosphere is elegant and festive with live entertainment. All proceeds benefit Second Harvest Food Bank of Orange County. South Coast Plaza / 714-435-2171

Pumpkins & Pancakes - A Children's Halloween Extravaganza: October

South Coast Plaza and The Friends of CASA present a Halloween Extravaganza that includes a scrumptious pancake breakfast, trick or treating, arts & crafts,





animal shows, opportunity prizes and more. Children come in costume. The event benefits abused and neglected children who are served by CASA (Court Appointed Special Advocates) programs of Orange County. South Coast Plaza / 714-435-2171

Persian Festival of Autumn (Mehregan): October

This is the largest Iranian-American gathering in the United States with over 20,000 visitors during the two-day event. You will enjoy ancestral Dances, Persian Customs, Arts and Crafts, Ancient Sports, Live Musical Performances, and taste the exotic Persian food. Orange County Fairgrounds / 949-851-3993

Project Cuddle's Annual Costume Ball: October

Project Cuddle, whose goal is to eradicate the growing epidemic of baby abandonment and neonaticide, has an annual Costume Gala and Fundraiser Ball. Tickets and info may be obtained by calling the Project Cuddle office at (714) 432-9681

Cruisin' For A Cure Car Show: September

The world's largest one day car show dedicated to helping find a cure for Prostate Cancer. Orange County Fairgrounds



Utilities

Cable TV: Time Warner 888-892-2253 / www.timewarnercable.com

Gas: Southern California Gas 800-427-2200 / www.socalgas.com

Electricity: Southern California Edison 800-655-4555 / www.sce.com

Telephone: AT&T 800-310-2355 / www.att.com

Trash: Costa Mesa Disposal 949-646-4617 / www.cmsdca.gov

Water: Mesa Consolidated Water District 949-631-1200 / www.mesawater.org

Libraries

Costa Mesa / Donald Dungan Branch

1855 Park Ave., Costa Mesa / 949-646-8845

Mesa Verde Branch Library

969 Mesa Verde Drive, Costa Mesa / 714-546-5274

Costa Mesa Technology Library

3033 South Bristol Ave., Suite Q, Costa Mesa / 714-754-4431

Post Offices

Costa Mesa Main Office: 1590 Adams Ave

Mesa Center: 2230 Fairview Rd





Costa Mesa Senior Center

695 W. 19th Street, Costa Mesa, CA 92627
(949) 645-2356 / www.costamesaseniorcenter.org

Education

Newport-Mesa Unified School District

2985 Bear Street / Costa Mesa, CA 92626
714-424-5000 Phone / web.nmusd.us

Elementary Schools

Adams (K-6)

2850 Club House Road, Costa Mesa, CA 92626 / 714-424-7935

California (K-6)

3232 California Avenue, Costa Mesa, CA 92626 / 714-424-7940

College Park (K-6) & College Park Pre-School

2380 Notre Dame Road, Costa Mesa, CA 92626 / 714-424-7960

Davis Magnet School (K-6) & Davis Pre-School

1050 Arlington Drive, Costa Mesa, Ca 92626 / 714-424-7930

Kaiser (3-6)

2130 Santa Ana Avenue, Costa Mesa, CA 92627 / 949-515-6950

Killybrooke (K-6)

3155 Killybrooke Lane, Costa Mesa, CA 92626 / 714-424-7945

Paularino (K-6) & Paularino Pre-School

1060 Paularino Avenue, Costa Mesa, CA 92626 / 714-424-7950

Pomona (K-6) & Pomona Pre-School

2051 Pomona Avenue, Costa Mesa, CA 92627 / 949-515-6980

Rea (K-6) & Rea Pre-School

661 Hamilton Avenue, Costa Mesa, CA 92627 / 949-515-6905

Sonora (K-6) & Sonora Pre-School

966 Sonora Road, Costa Mesa, CA 92626 / 714-424-7955

Victoria (K-6)

1025 Victoria Street, Costa Mesa, CA 92627 / 949-515-6985

Whittier (K-6) & Whittier Pre-school

1800 Whittier Avenue, Costa Mesa, CA 92627

949-515-6990 / 949-515-6819 (Pre-school)

Wilson (K-6) & Wilson Pre-School

801 Wilson Street, Costa Mesa, CA 92627 / 949-515-6995

Woodland (K-2)

2025 Garden Lane, Costa Mesa, CA 92627 / 949-515-6945





Middle Schools

TeWinkle (7-8)

3224 California Avenue, Costa Mesa, CA 92626 / 714-424-7965

High Schools

Costa Mesa (7-12)

2650 Fairview Road, Costa Mesa, CA 92626 / 714-424-8700

Estancia (9-12)

2323 Placentia Avenue, Costa Mesa, CA 92627 / 949-515-6500

Early College (9-12)

2990 Mesa Verde Drive, Costa Mesa, CA 92626 / 714-241-6108

Alternative Education Center

Monte Vista / Back Bay (High)

390 Monte Vista Avenue, Costa Mesa, CA 92627 / 949-515-6900



Adult Education Center

2045 Meyer Place, Costa Mesa, CA 92627

949-515-6996 Phone / 949-515-6745 Fax

Coast Community College District

1370 Adams Ave., Costa Mesa, CA 92626

714-438-4600 / www.cccd.edu

Vanguard University

55 Fair Drive, Costa Mesa, CA 92626

714-556-3610 / www.vanguard.edu





COSTA MESA

77 FAIR DRIVE
COSTA MESA, CA 92626

INCORPORATED: 1953
AREA: 15.8 square miles
TELEPHONE: (714) 754-5000
WEBSITE: www.costamesaca.gov

CITY COUNCIL

Mayor	Katrina Foley
Mayor Pro Tem	Sandra Genis
Council Members	Allan Mansoor
	Jim Righeimer
	John Stephens

DEPARTMENTS

City Manager	(714) 754-5328
Community Development	754-5329
City Council	754-5099
Community Services	754-5300
Fire Authority	754-5106
Police Department	754-5281

POPULATION CHARACTERISTICS

POPULATION			2010 POPULATION BY AGE (1)			2010 RACIAL & ETHNIC POPULATION (1)		
1960	37,550	(1)		Total	%		Number	%
1970	72,660	(1)	0-4	7,191	6.5	Non-Hispanic White	56,993	51.8
1980	82,562	(1)	5-9	6,348	5.8	Hispanic of any race	39,403	35.8
1990	96,357	(1)	10-14	6,207	5.6	Non-Hispanic Asian	8,483	7.7
2000	108,724	(1)	15-19	7,186	6.5	Non-Hispanic Black	1,352	1.2
2010	109,960	(1)	20-24	9,597	8.7	All Other NH Races	3,729	3.4
			25-34	21,061	19.2			
2005	109,030	(2)	35-44	17,150	15.6	Total:	109,960	100%
2006	108,096	(2)	45-54	14,958	13.6			
2007	107,641	(2)	55-59	5,737	5.2			
2008	107,514	(2)	60-64	4,411	4.0			
2009	109,808	(2)	65-74	5,291	4.8			
2010	109,960	(2)	75-84	3,348	3.0			
2011	110,253	(3)	85+	1,475	1.3			
2012	111,347	(3)						
2013	112,299	(3)	Total:	109,960	100%			
2014	112,516	(3)						
2015	113,874	(3)	Median Age:	33.6				
2016	114,102	(3)						
2017	114,044	(3)	% of County:		3.7			

CURRENT PROJECTIONS SERIES POPULATION: OCP-2014 MODIFIED (4)

2015	112,343
2020	113,859
2025	115,650
2030	116,505
2035	116,491
2040	116,387

VOTER REGISTRATION, 2017 (6)

Democratic	17,647	Peace & Freedom	156
Republican	19,168	Misc.	169
Independent	1,829	Decline To State	14,706
Green	282		
Libertarian	833	Total:	54,790

VITAL STATISTICS (5)

	2010	2011	2012
Total Births	1,557	1,563	1,499
Birth Rate	14.2	14.1	13.4
Total Deaths	570	668	626
Death Rate	5.2	6	5.6

Note: 2010 Census figures exclude the annexation of Sunset Beach to Huntington Beach.

Sources: (1) April Decennial Census of Population, U.S. Census Bureau. (4) Center for Demographic Research, CSUF.
 (2) E-8 Released November 2012, State Dept. of Finance. (5) OC Health Care Agency rates per 1,000 pop. 2012 is the latest published data by city.
 (3) E-5 (Revised) Released May 2017, State Dept. of Finance. (6) OC Registrar of Voters, 2017.